

SUPERPRO[®] / 3000U

USB Interfaced Ultra-high Speed Stand-alone Universal Device Programmer

- * Programs and Verify 32 Mb Flash Memories Within 13.5 Sec.
- * Up to 100 Pins Universal Pin-drivers
- * Supports 20,000+ Devices including 1.5V devices
- * High Programming Quality
- * PC Hosted (USB), Stand-alone and Terminal - Three Modes in One Unit
- * Powerful and Intelligent Software



SUPERPRO[®]/3000U

USB Interfaced Multi-application High-speed Universal Device Programmer

FEATURES

* Fastest programmer in the West (and East)

Programs high-density Flash memory devices at near theoretical minimum programming times (Programs and Verifies Intel 28F320W18, 32Mb, in 13.5 Sec.)

* Universal pindrivers up to 100 pins

- Standard universal 48 pindrivers support devices down to 1.5 volts.
- 100 pindriver expander module (option), PEP3000, allows for programming of devices with up to 100 pins.
- Universal pindriver architecture up to 100 pins makes it easy to develop device algorithms and to locate socket adapters

* Advanced hardware features

- Advanced hardware design minimizes ground bounce noise enabling programming of low voltage, down to 1.5 volts, devices reliably.
- Only IC manufacturer approved programming algorithms are used for high reliability.
- $\pm 5\%$ and $\pm 10\%$ Vcc verification enhances programming reliability.

* Supports 20,000+ devices from 134 IC manufacturers including MEMORY, MCU and PLD.

- Free software updates via Internet. New device updates released monthly.

* Designed for multi-applications, three modes of operation are supported

- Standard PC hosted operation for R&D and Engineering.
- Stand-alone operation for manufacturing or service. Built-in keyboard and LCD display provides for local operation.
- Terminal mode to operate via an external instrument such as IC handler, terminal, or controller.

* Pin continuity and wrong chip insertion check prevent chips from accidental damage

* Over-current and over-voltage protection for safety of the chip and programmer hardware.

* Windows 98/ME/NT/2000/XP compatibility

* New user-friendly and powerful software with many new functions

- **Project** function simplifies processes such as device selection, file loading, device configuration setting, program option and batch file setting into one touch step.
- **History** of device selection and file loading simplifies user operation
- **Batch** command combines device operations like program, verify, security into a single command at any sequence.
- **Auto start** Batch command begins to program a chip automatically as soon as the chip is inserted.
- **Serial numbers** can be generated and programmed onto a chip.
- * **Clustering of programmers provides for a flexible and easy way** for volume production programming. Several units work together in stand-alone mode to provide an environment for volume programming. Advantages over traditional gang programming are:
 - **Flexible and expandable** Start with one unit and add more units as the need arises.
 - **Less downtime** In case of a failure of a unit, other units continue to operate
 - **Concurrent programming** Each chip begins to program as soon as a chip is inserted into a socket
- **20,000 devices supported** Device updates are quick and easy

SPECIFICATIONS

Devices Supported:

EPROM, Paged EPROM, Parallel and Serial EEPROM, FPGA Configuration Serial PROM, FLASH Memory (NOR and NAND), BPROM, NVRAM, SPLD, CPLD, EPLD, Firmware HUB, Microcontroller, MCU, Standard Logic.

Socket Adapter Supported:

DIP, SDIP, PLCC, JLC, SOIC, QFP, TQFP, PQFP, VQFP, TSOP, TSOPII, SOP, PSOP, TSSOP, SON, EBGA, FBGA, VFBGA, μ BGA, CSP, SCSP etc.

PC Interface: USB

Stand-alone Mode Operation Storage Media: Compact Flash Card (option)

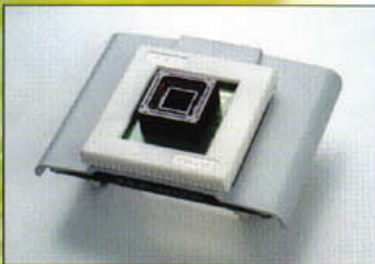
Optional Accessories: PEP3000 Pin-driver Expansion Pack, Socket Adapters, Compact Flash Card

Items included: programming unit with DIP48 socket, AC adapter, Program CD, USB Cable, User's Guide

Power Supply: Input 100V-240VAC, Output 12VDC/2.0 Amp

Programming Unit Dimension: 240(L) x 150(W) x 50(H) mm

Gross Shipping Weight: 5 Lbs.



XELTEK

Xeltek Inc.
1102 Walsh Ave.
Santa Clara, CA 95090
U.S.A.
Tel: +1 408 5889940
Fax: +1 408 5889944
www.xeltek.com

Xeltek Europe BV
P.O. Box 7088
5980 AB Panningen
The Netherlands
Tel: +31 77 3066400
Fax: +31 77 3066409
www.xeltek-europe.com

www.xeltek-europe.com