



Tips and Tricks

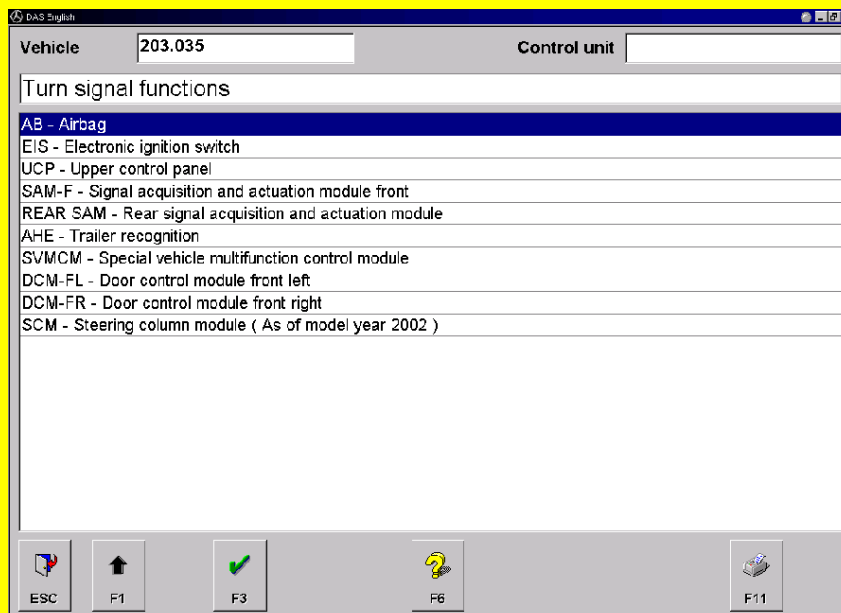
GSP/TCT, GSP/TDE, GSP/TDS

Functions applicable to all control units

In case of complaints that cannot be immediately attributed to a given control unit, the "functions applicable to all control units" will be of great assistance in locating the cause of the fault. After you select one of the functions (e.g. blink function), only those control units that feature this "function applicable to all control units" will be shown.

Example of a function applicable to all control units:

- Exterior lamps
- Blink function



These control units provide only those actual values, actuation modes and codings required for the function.

The "Functions applicable to all control units" menu item is located in the "Main group" menu.

Note: For commercial vehicles, the "functions applicable to all control units" will be reintroduced and be available for the first time for MP2 (new ACTROS, to be introduced in the spring of 2003). For commercial vehicles, the "Functions applicable to all control units" menu item is located in the main menu for the model series (e.g. 'ACTROS MP2').

"Functions applicable to all control units" are not planned for buses.